

SPECIAL PROJECTS OF NATIONAL SIGNIFICANCE

TRANS ACCESS & HHOME

+ TRANS ACCESS



*A PROGRAM TO ENHANCE
ENGAGEMENT & RETENTION IN HIV
CARE FOR TRANSGENDER WOMEN OF
COLOR IN SAN FRANCISCO, CA*



**ASIAN & PACIFIC ISLANDER
WELLNESS CENTER**

The Homeless Health Outreach and Mobile Engagement (HHOME) Project

**This program is funded by Health Resources and Services Administration
(HRSA) Special Project of National Significance (SPNS) initiative**

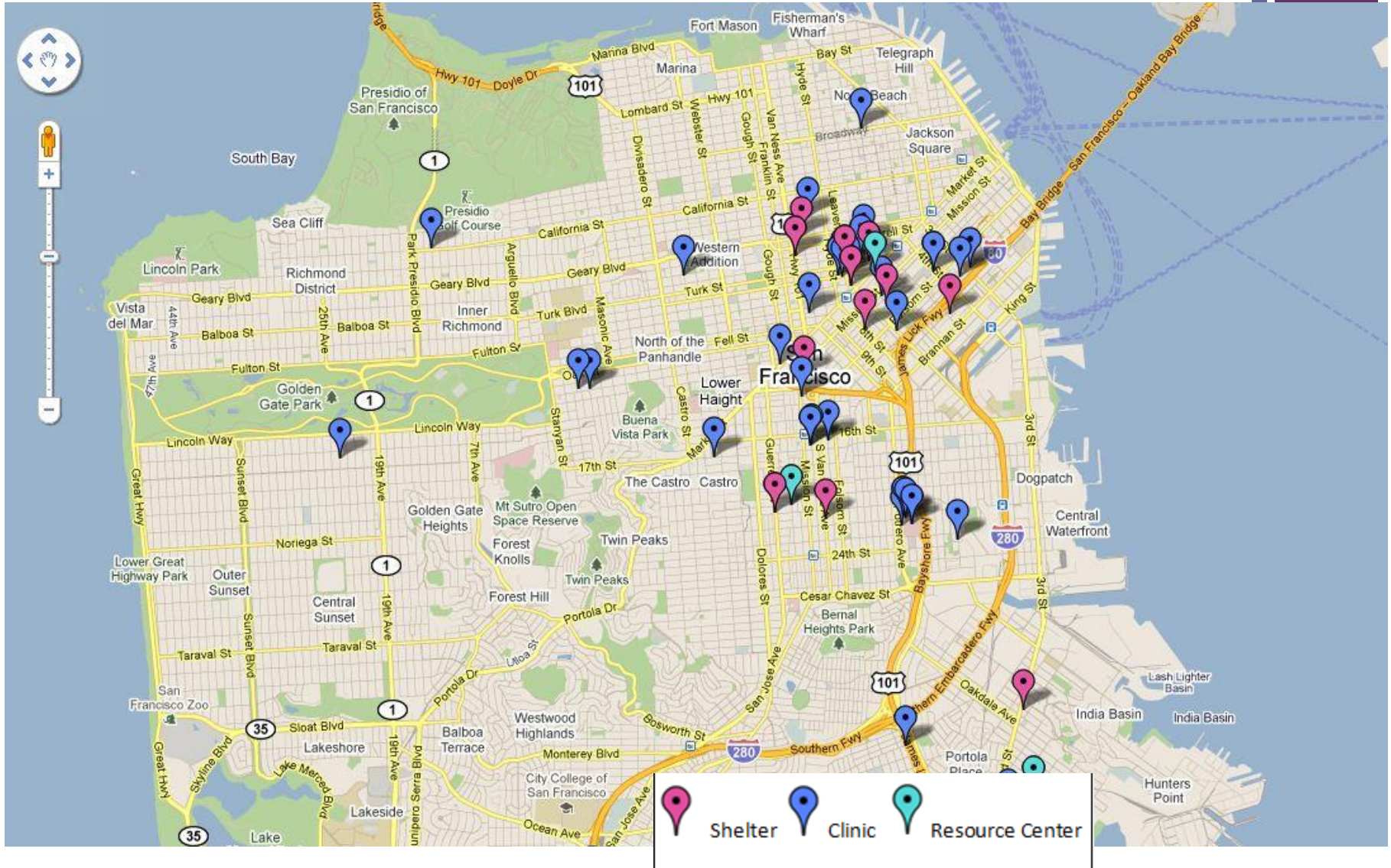
**“Building a Medical Home for Multiply Diagnosed HIV
Positive Homeless Populations Initiative”**

+ Objectives

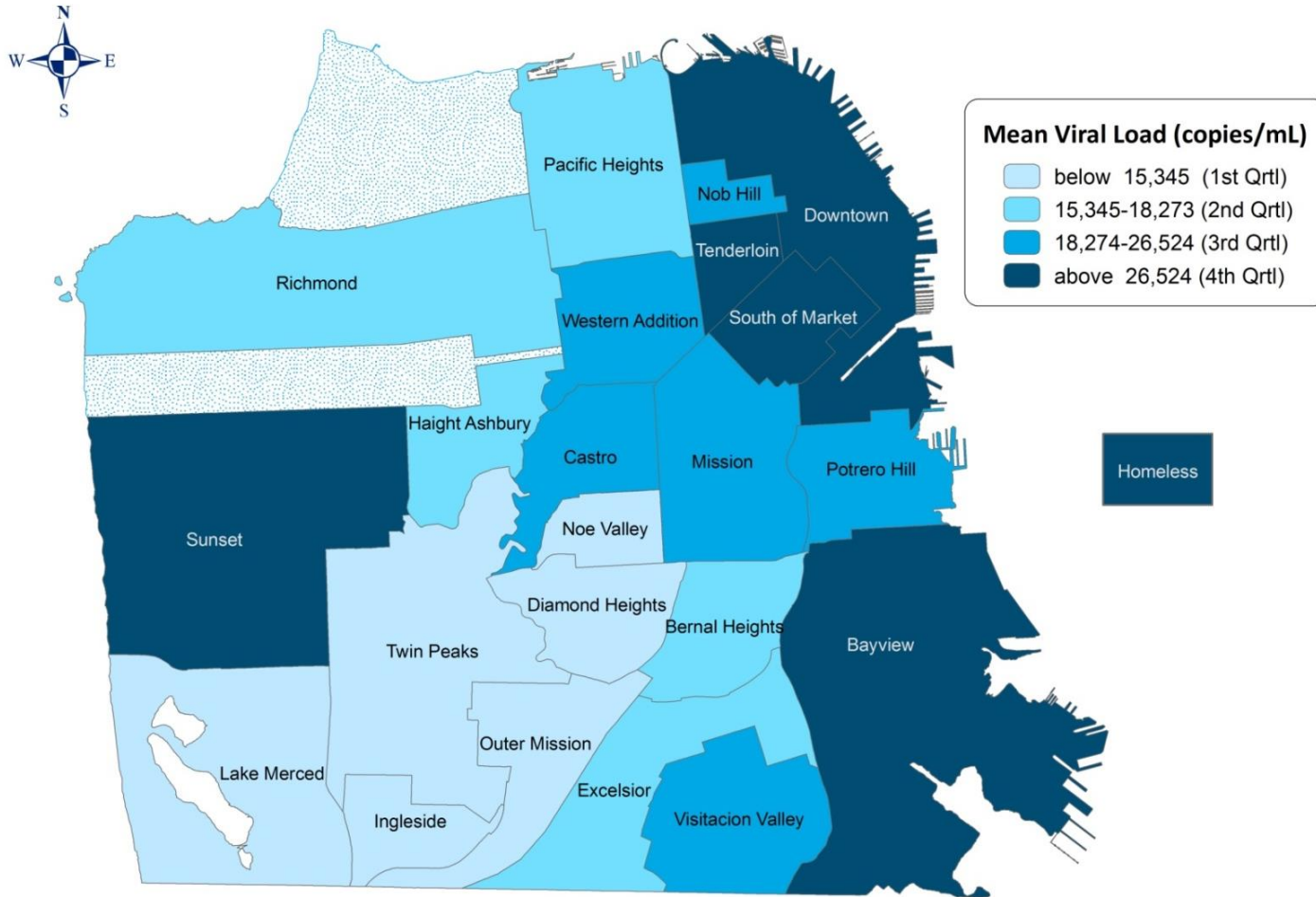
- Brief overview of the Transitions Division
- Developing the HHOME Program
 - Background Data
 - Stakeholders
 - Program Overview: Linkage to care for Complex Clients and System Improvement
- Case
- Current Data



+ SF Department of Public Health medical Clinics, Consortium Clinics, and Shelters



+ Spatial Distribution of Mean CVL by Neighborhood, 2005-2008



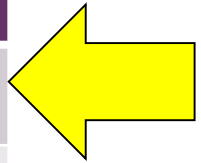
Homelessness is an independent risk factor for elevated Viral Load



Vulnerability Index: Study Results

Prevalence (N= 800, using CCMS)

	SF Study Population	US Homeless	US General Population
HIV/AIDS	6.5%	3.2%	1%
Kidney disease	13.3%	5.1%	11.5%
Liver disease	13.2%	10.3%	0.15%
Substance Abuse	80.6%	n/a	8.9%
Mental Health	66.8%	n/a	4.4%
Tri-morbidity	44.4%	28.3%	n/a



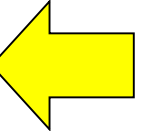
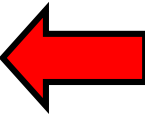
“US Homeless” data from Common Ground surveyed homeless populations

“US General Population” from CDC Reports

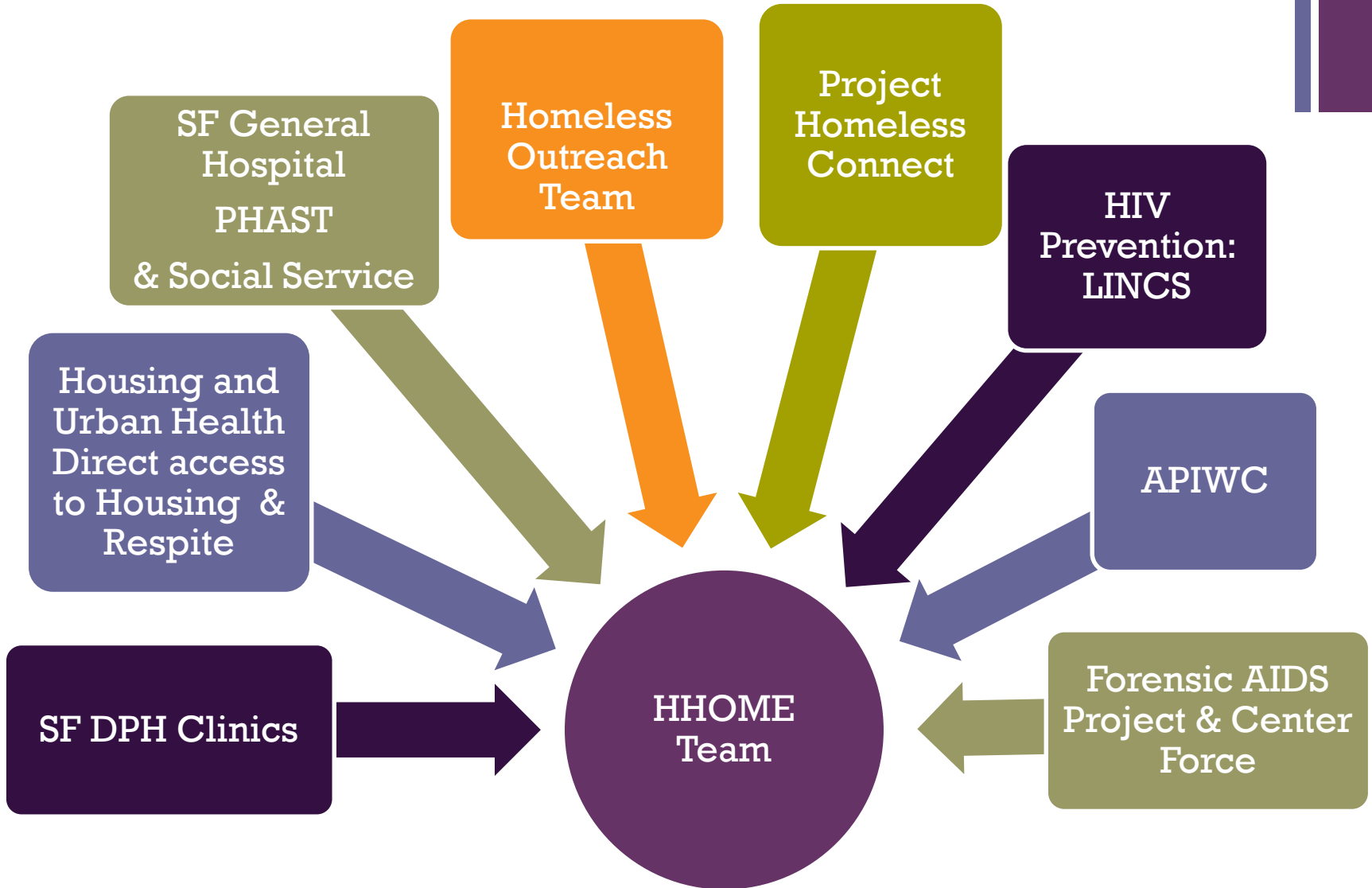
High Users of Multiple System



FY0910 HUMS Clients	Count	%
GRAND Total Individuals	477	100%
HIGH EMS AMBULANCE USERS	186	39%
SUBSTANCE ABUSE URGENT/EMERGENT USERS	366	77%
Any History Sobering Center Client	319	67%
MENTAL HEALTH URGENT/EMERGENT USERS	358	75%
Schizophrenia Diagnosis in any episode	131	27%
Ever with ICM	165	35%
Ever Conservatorship	73	15%
MEDICAL URGENT/EMERGENT USERS	473	99%
HIV+ Diagnosis History	75	16%
Hep C Diagnosis History	201	42%
Currently Assigned to PCP	249	52%
Currently Assigned to PCC	381	80%



+ SF HHOME PARTNERS



Referrals

Hospital

Community



Medical

Psychiatric

Emergency Room

Long Term Care Facility

Primary Care

Urgent Care

'Street': Police and Outreach

Jail

'Pre-HHOME' Services for Homeless Marginally Housed HIV + Individuals in San Francisco

Primary Medical
Care

Case
Management:
HOT, ICM or
Clinic Based

Office Based RN
Care Coordination
and Adherence

Behavioral Health
Treatment

Office Base Opiate
Treatment

Shelter

Dental Care

Housing:
Stabilization and
Permanent
Supportive

Respite Care

Benefits
Acquisition

HIV Prevention:
LINCS
coordination
'for Lost Clients'

Quality
Improvement:
Chronic Disease
Management



SYSTEM WRANGLER

Gap in Service

Goal of Integrated Mobile Care for Hardest to Reach HIV Positive Homeless Individuals

**Mobile Medical
Case Management**

**Stabilization Room
and Respite Access**

**Mobile Integrated
Primary Medical
Care**

**Mobile RN Care
Coordination and
Adherence**

**City Wide
Evaluation for Level
of Care for Clients**

**Coordination of
community partners
and services
available to clients**

**Access to all city
Supportive Housing
(outside of DPH)**

**Integrated Patient
HIV Registry**

**Fully Utilize Peer
Navigators as part of
care team**

Services to be improved by SPNS Grant

Targeting the Hardest To Serve

Mobile
Medical



Case
Management



***HHOME
TEAM***

HOUSING:
Stabilization

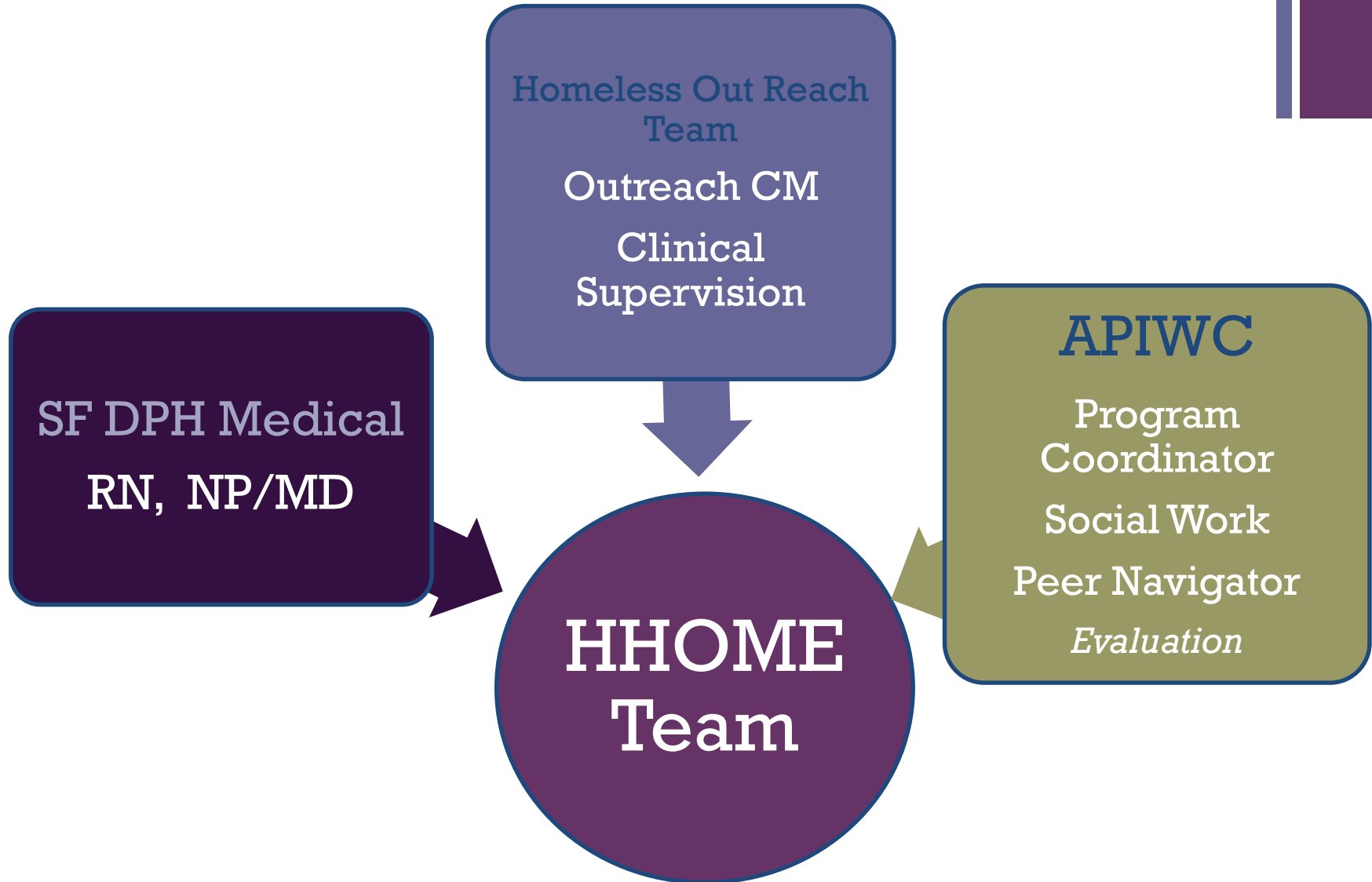
Behavioral
Health

Navigation



HHOME Team

+ Linking and Retaining HIV+ Multiply Diagnosed Homeless Clients in Care



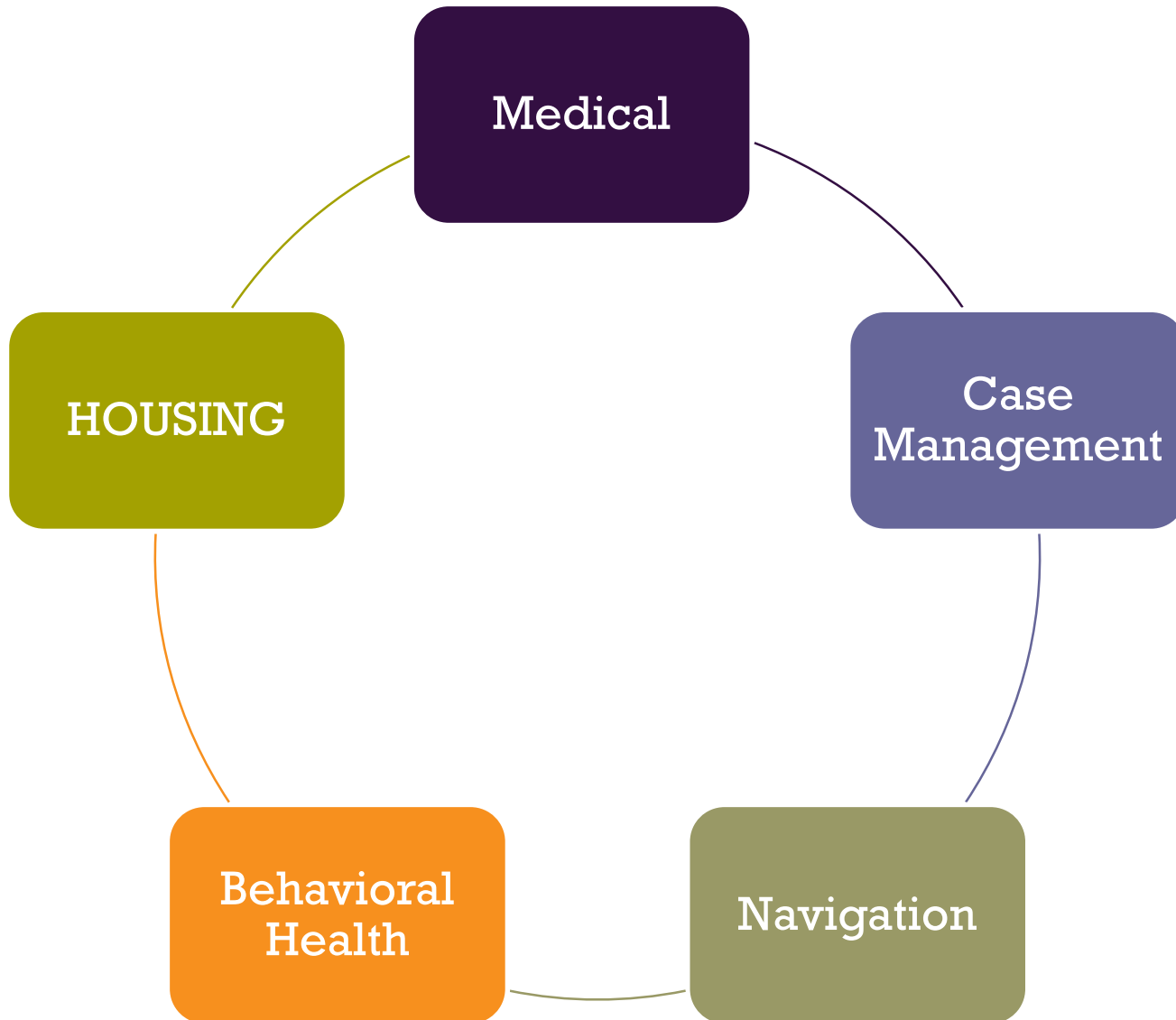
+ HHOME

To be considered for enrollment, a HHOME client must be at minimum:

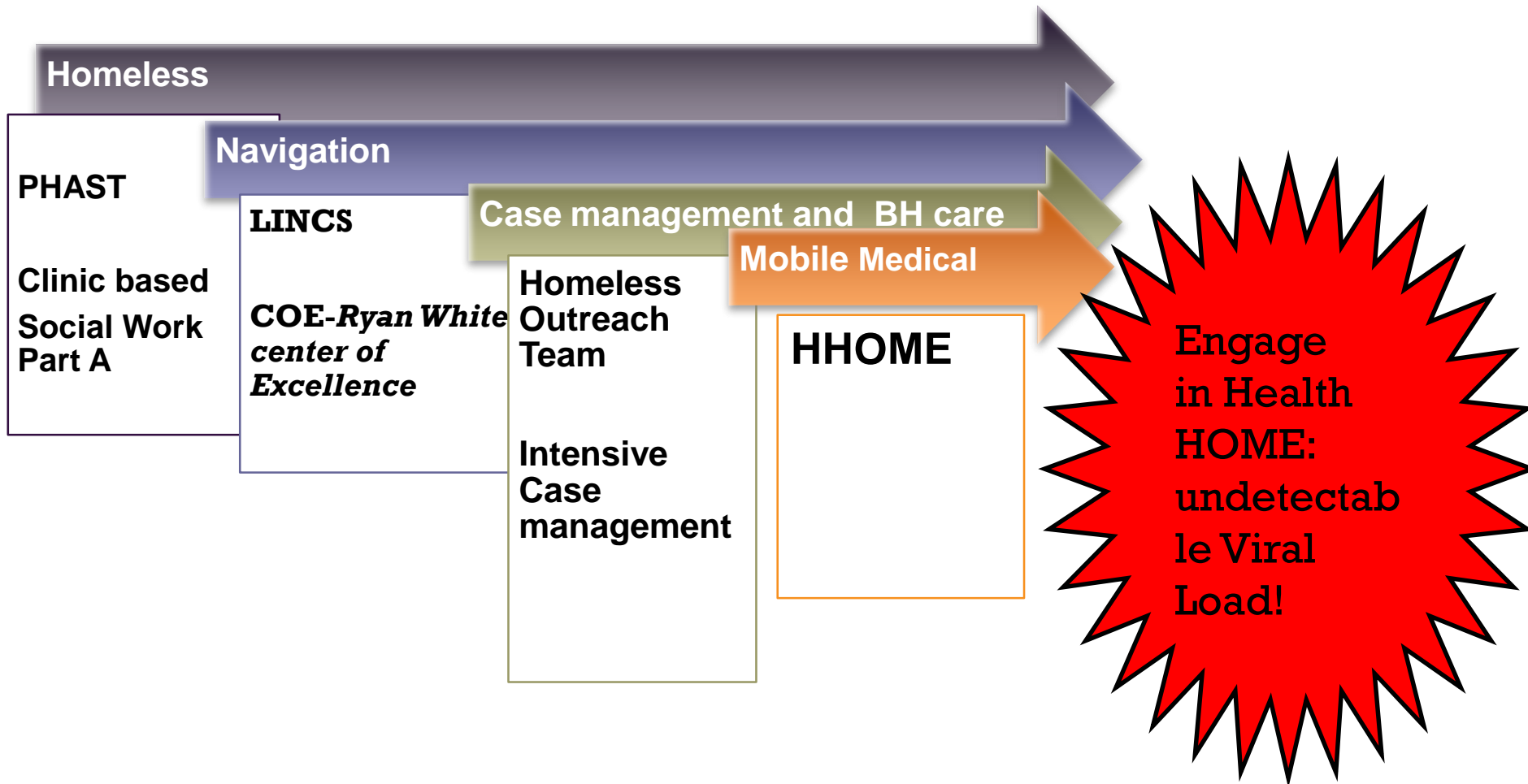
- HIV-positive
- Not adherent to or prescribed HIV ART
- Hx of substance use
- Hx of mental illness
- Living on the street or in HRSA-defined unstable housing
- Not currently engaged in primary medical care

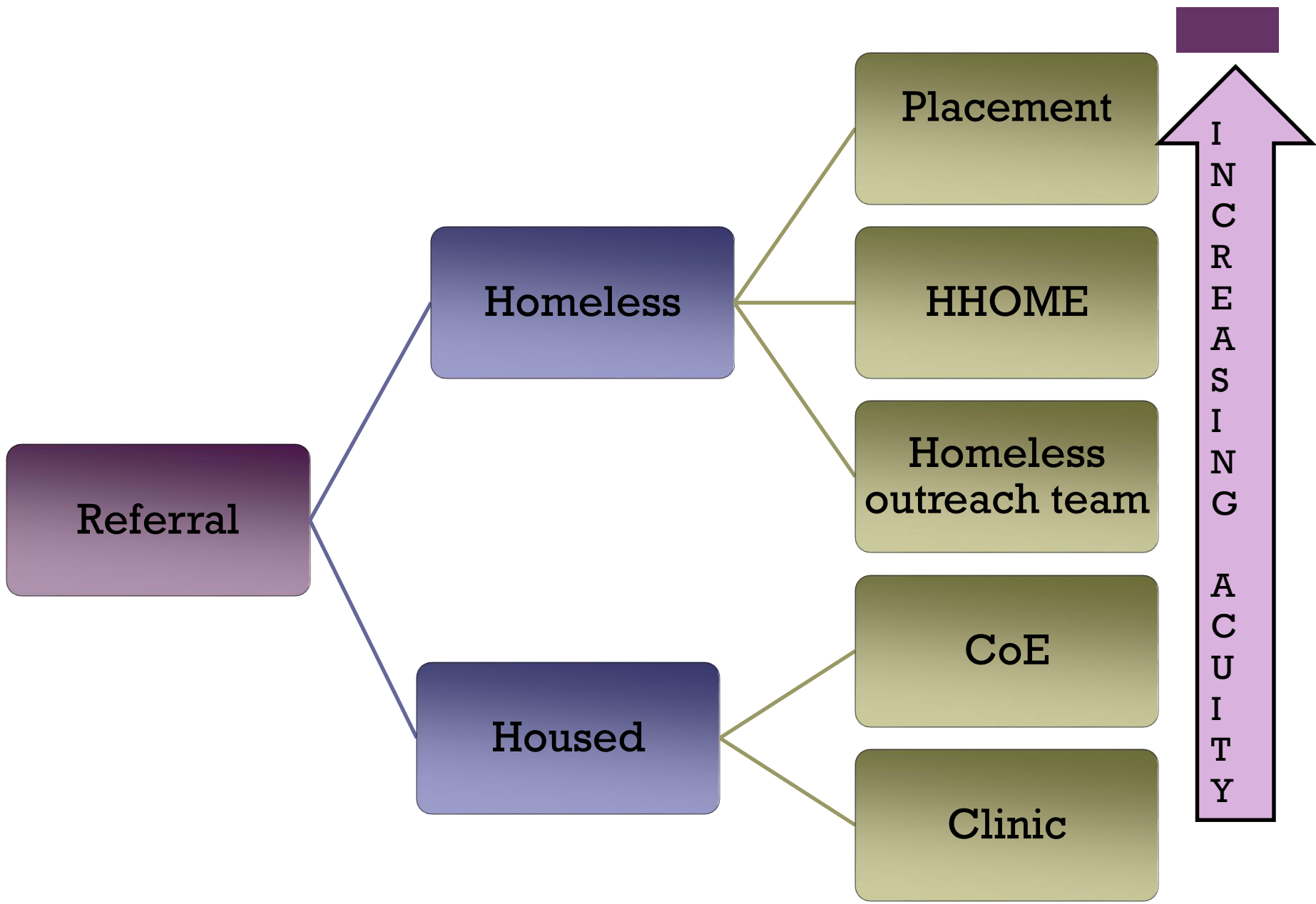


Acuity Scale



Levels of Support for Difficult to Engage Homeless HIV Clients





Referral

Homeless

Housed

Placement

HHOME

**Homeless
outreach team**

CoE

Clinic

**I
N
C
R
E
A
S
I
N
G

A
C
U
I
T
Y**

Hospital Discharge Algorithm New Positive, Not engaged or no Primary Care



Evaluation of acuity and chronicity
Assistance from Placement

Homeless

Transitions
Division

LINC's
navigation

CM,
SA/MH

CM,
SA/MH

Mobile
medical

Care Coordination /Placement
Conserved or HUMS

Coe

HOT

HHOME

YES

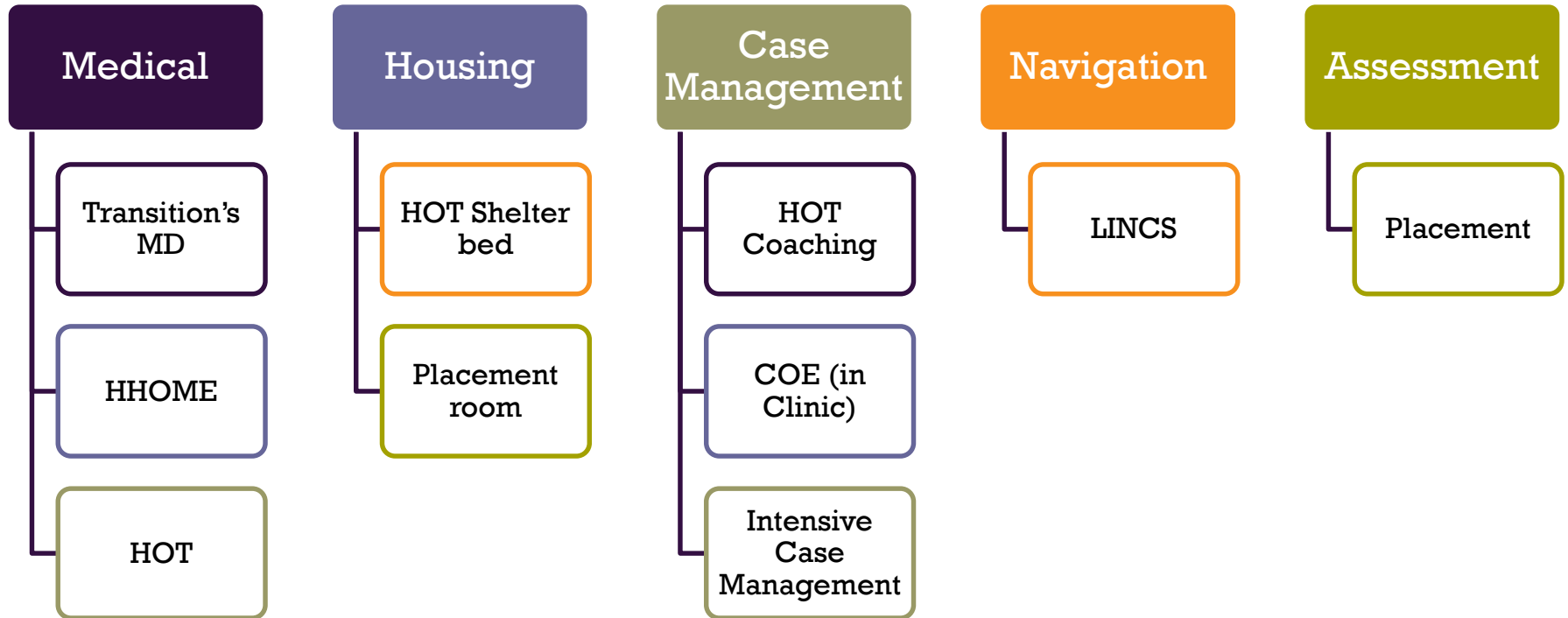
NO

Just navigation and housing

no

yes

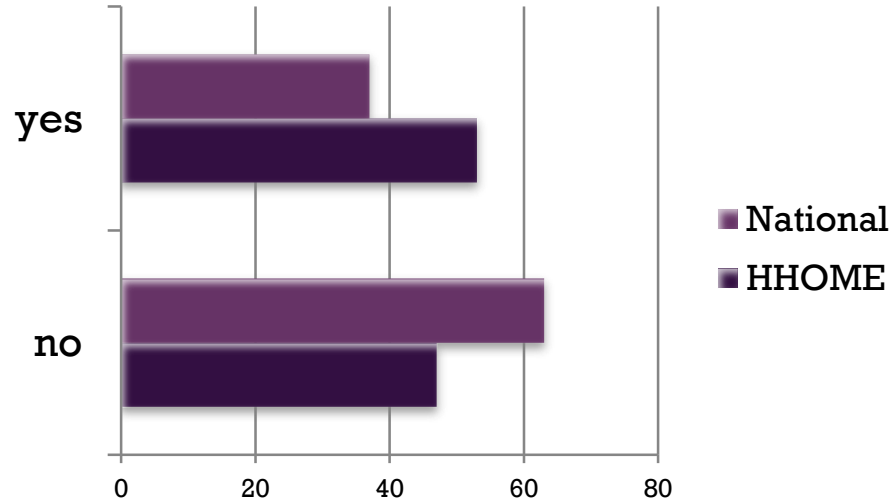
Support For Gaps in Service for Level of Care



WHAT'S WORKING ?

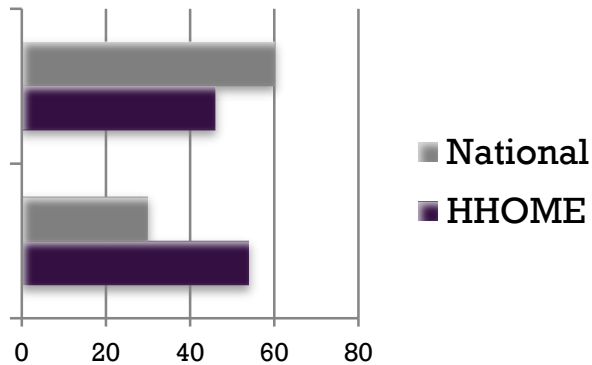


**% of clients on ART,
compared to the % of
national population
prescribed ART**



detectable (>500)

virally suppressed (<500)



**% of clients that are virally
suppressed, compared to % of
national population experiencing
viral suppression**



Our Approaches





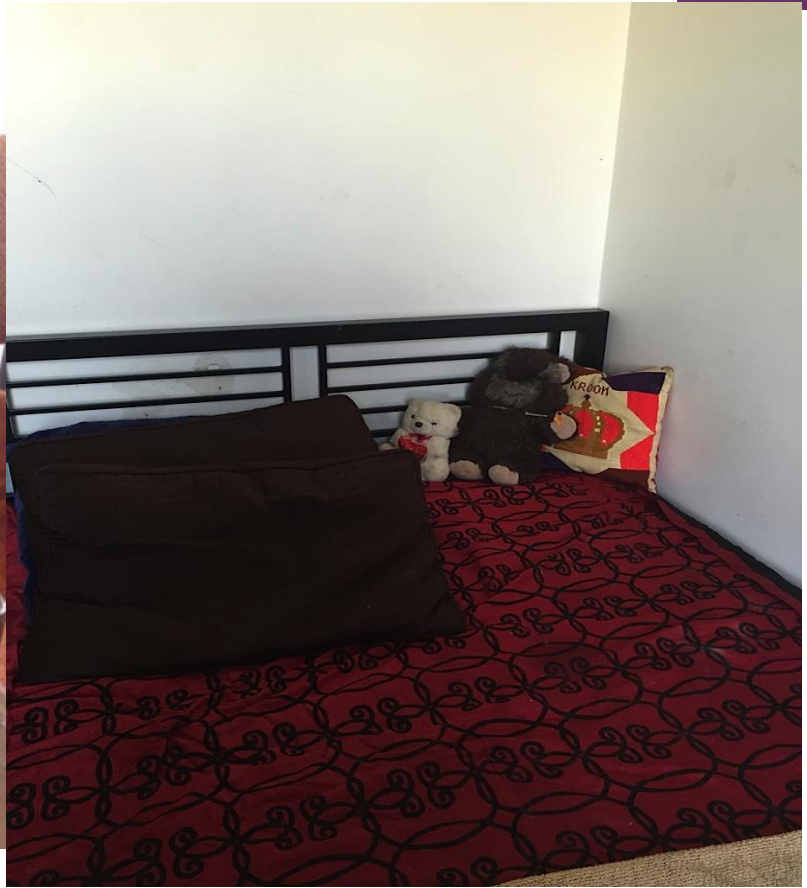
Some of the Amazing Stories

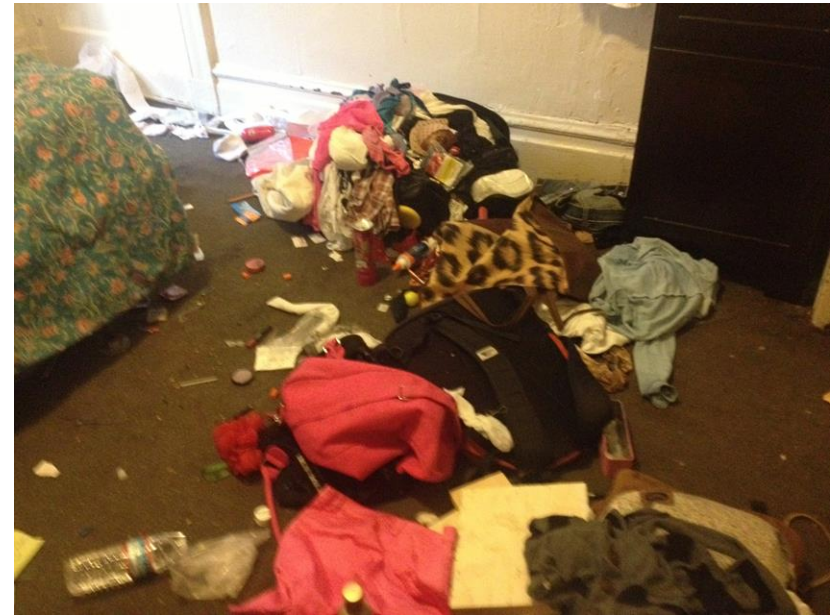


'The ROOM' tells the Story



+ Challenges and Successes





Never Give up on Anyone



Challenges to Engagement and Retention







SUNDAY
USE BY : 03/24/2015
1-Compera 200/25/300mg
1-Folic Acid 1 Mg Tablet
1-Quetiapine 100mg

SUNDAY
USE BY : 03/24/2015
1-Compera 200/25/300mg
1-Folic Acid 1 Mg Tablet
1-Quetiapine 100mg

BAY DRUG PHARMACY

BAY DRUG PHARMACY

SATURDAY
USE BY : 03/24/2015
1-Compera 200/25/300mg
1-Folic Acid 1 Mg Tablet
1-Quetiapine 100mg

SATURDAY
USE BY : 03/24/2015
1-Compera 200/25/300mg
1-Folic Acid 1 Mg Tablet
1-Quetiapine 100mg

BAY DRUG PHARMACY

BAY DRUG PHARMACY

FRIDAY
USE BY : 03/24/2015
1-Compera 200/25/300mg
1-Folic Acid 1 Mg Tablet
1-Quetiapine 100mg

FRIDAY
USE BY : 03/24/2015
1-Compera 200/25/300mg
1-Folic Acid 1 Mg Tablet
1-Quetiapine 100mg

BAY DRUG PHARMACY

BAY DRUG PHARMACY

THURSDAY
USE BY : 03/24/2015
1-Compera 200/25/300mg
1-Folic Acid 1 Mg Tablet
1-Quetiapine 100mg

THURSDAY
USE BY : 03/24/2015
1-Compera 200/25/300mg
1-Folic Acid 1 Mg Tablet
1-Quetiapine 100mg

BAY DRUG PHARMACY

BAY DRUG PHARMACY

WEDNESDAY
USE BY : 03/24/2015
1-Compera 200/25/300mg
1-Folic Acid 1 Mg Tablet
1-Quetiapine 100mg

WEDNESDAY
USE BY : 03/24/2015
1-Compera 200/25/300mg
1-Folic Acid 1 Mg Tablet
1-Quetiapine 100mg

BAY DRUG PHARMACY

BAY DRUG PHARMACY

TUESDAY
USE BY : 03/24/2015
1-Compera 200/25/300mg
1-Folic Acid 1 Mg Tablet
1-Quetiapine 100mg

TUESDAY
USE BY : 03/24/2015
1-Compera 200/25/300mg
1-Folic Acid 1 Mg Tablet
1-Quetiapine 100mg

BAY DRUG PHARMACY

BAY DRUG PHARMACY

MONDAY
USE BY : 03/24/2015
1-Compera 200/25/300mg
1-Folic Acid 1 Mg Tablet
1-Quetiapine 100mg

MONDAY
USE BY : 03/24/2015
1-Compera 200/25/300mg
1-Folic Acid 1 Mg Tablet
1-Quetiapine 100mg

BAY DRUG PHARMACY

BAY DRUG PHARMACY



What has worked?



